

Alma Lynne[®]

DESIGNS

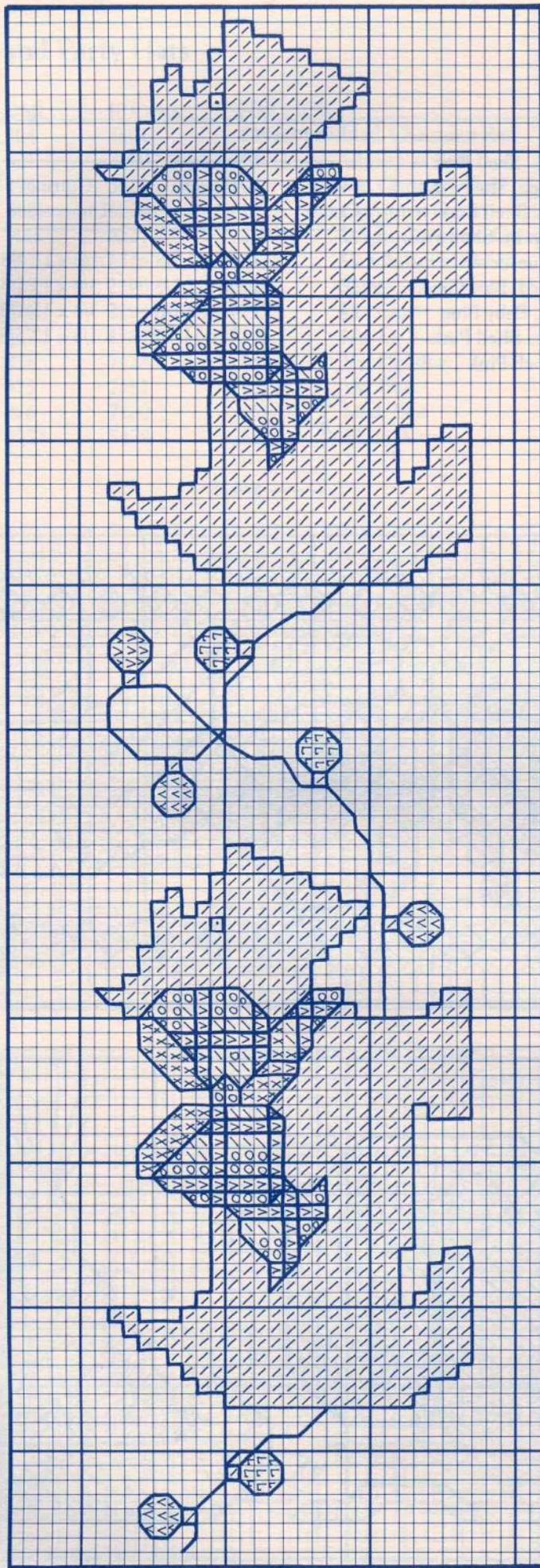
BODACIOUS BORDERS

\$4.95
ALX-97



•Counted Cross Stitch•

Scotties



Dimensions		
Fabric Count	Design Area	Cutting Dimensions
22	1 1/8 x 4 7/8	7 1/8 x 10 7/8
18	1 1/2 x 5 7/8	7 1/2 x 11 7/8
14	1 7/8 x 7 5/8	7 7/8 x 13 5/8
11	2 3/8 x 9 5/8	8 3/8 x 15 5/8

DMC	JP Coats	ANCHOR	
White	1001	2	White
310	8403	403	Black
321	3500	47	Christmas Red
498	3410	43	Dk. Christmas Red
501	6878	878	Dk. Blue Green
726	2294	295	Lt. Topaz
815	3000	44	Med. Garnet
902	3083	72	Vy. Dk. Garnet

• \ O ^ V 7 / X

Special Instructions

—Backstitch - Black

26 → 106

Bows with Borders

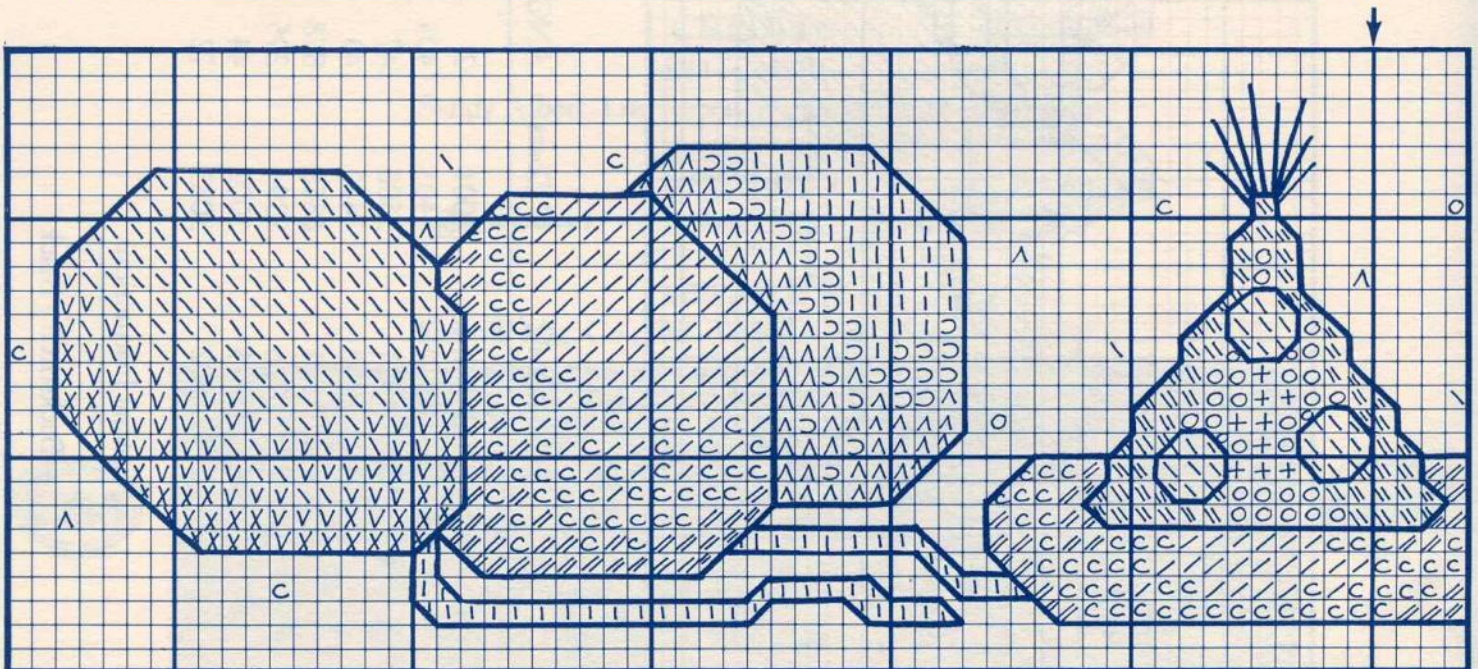
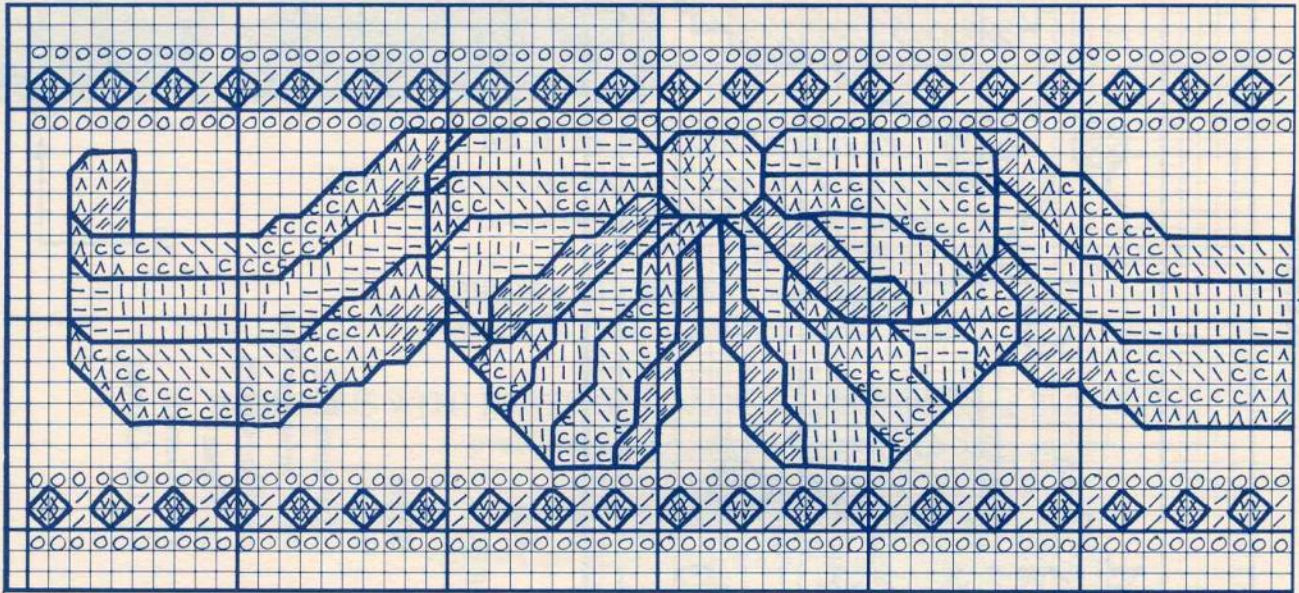
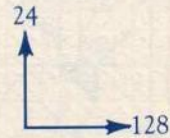
	DMC	JP Coats	ANCHOR	
//	221	3242	342	Dk. Shell Pink
\	223	3241	895	Med. Shell Pink
X	224	3240	893	Lt. Shell Pink
V	225	3066	892	Vy. Lt. Shell Pink
O	502	6876	877	Blue Green
/	503	6879	875	Med. Blue Green
—	775	7031	975	Lt. Baby Blue
^	3721	—	—	Dk. Shell Pink
C	3722	—	896	Shell Pink
	White			

Dimensions

Fabric Count	Design Area	Cutting Dimensions
22	1 1/8 x 5 7/8	7 1/8 x 11 7/8
18	1 3/8 x 7 1/8	7 3/8 x 13 1/8
14	1 3/4 x 9 1/8	7 3/4 x 15 1/8
11	2 1/8 x 11 5/8	8 1/8 x 17 5/8

Special Instructions

Backstitch - 221



Balloons and Party Hats

	DMC	IP Coats	ANCHOR	
O	304	3401	19	Med. Christmas Red
I	321	3500	47	Christmas Red
Λ	498	3410	43	Dk. Christmas Red
///	699	6228	923	Christmas Green
O	700	6227	228	Bright Christmas Green
+	701	6226	227	Lt. Christmas Green
X	725	2298	305	Topaz
V	726	2294	295	Lt. Topaz
\	727	2289	293	Vy. Lt. Topaz
///	824	7128	164	Vy. Dk. Blue
C	825	7181	162	Dk. Blue
/	826	7180	161	Med. Blue
	3371	5478	382	Black Brown

Dimensions

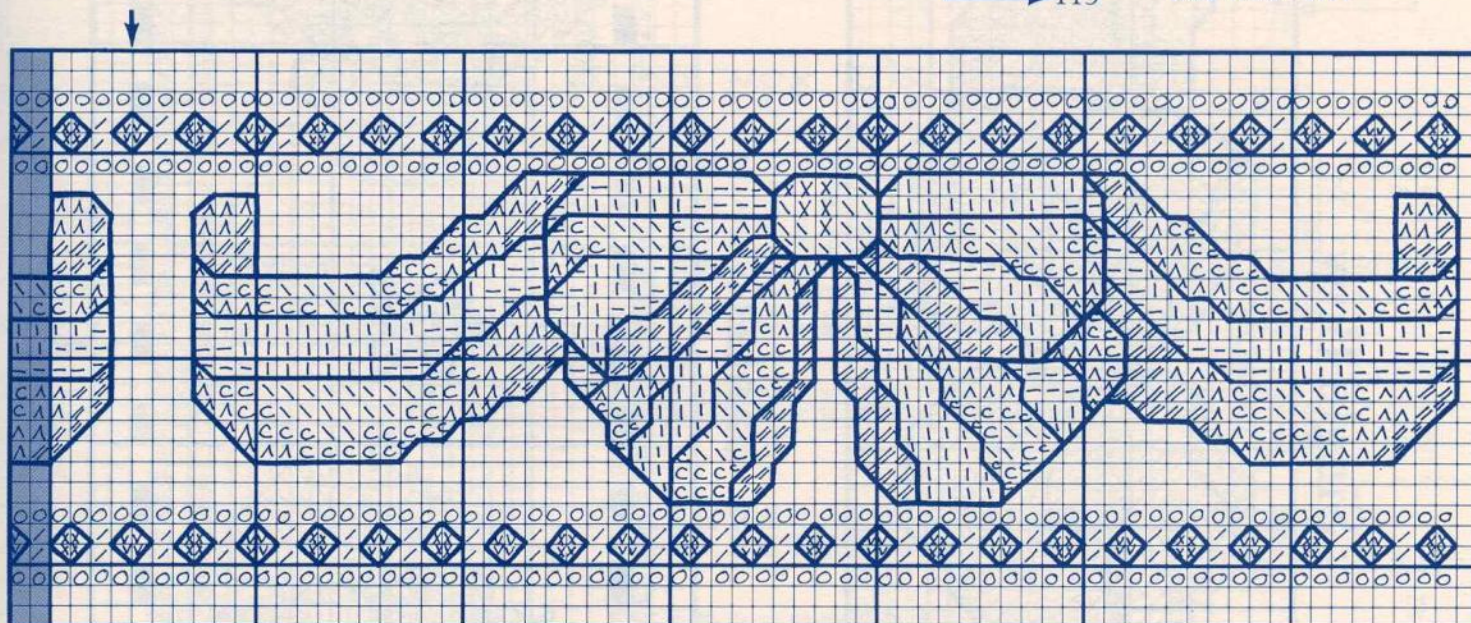
Fabric Count	Design Area	Cutting Dimensions
22	1 x 5 3/8	7 x 11 3/8
18	1 1/4 x 6 1/2	7 1/4 x 12 1/2
14	1 5/8 x 8 3/8	7 5/8 x 14 3/8
11	2 1/8 x 10 5/8	8 1/8 x 16 5/8

Special Instructions

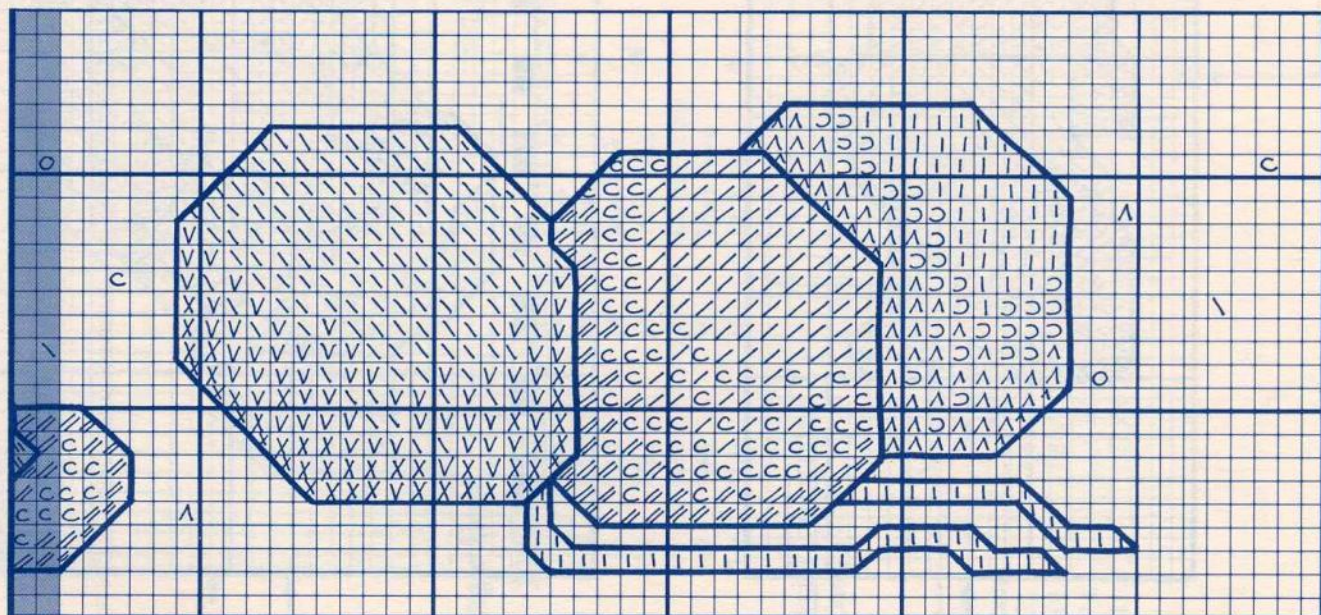
Backstitch - 3371

23

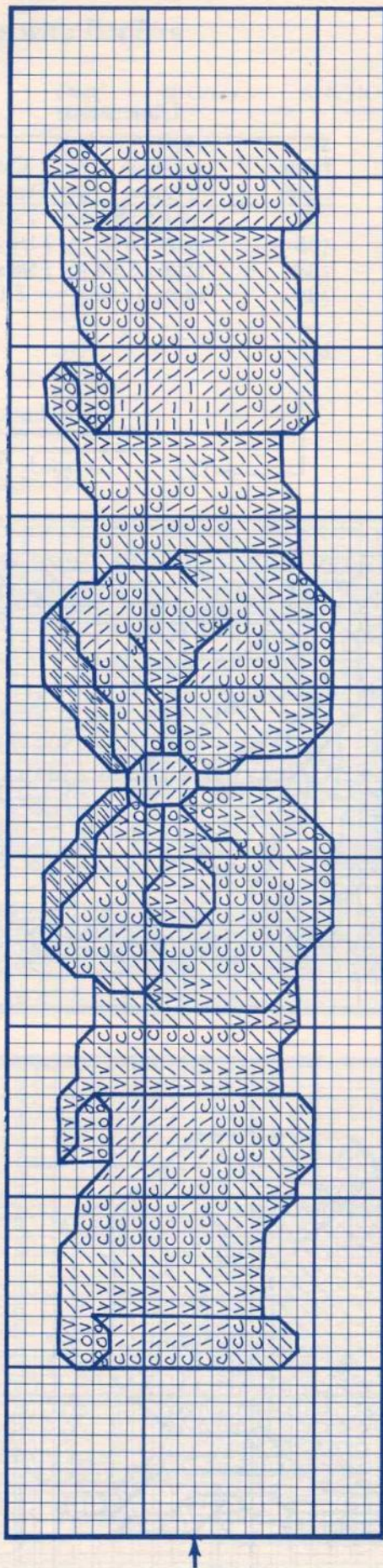
113



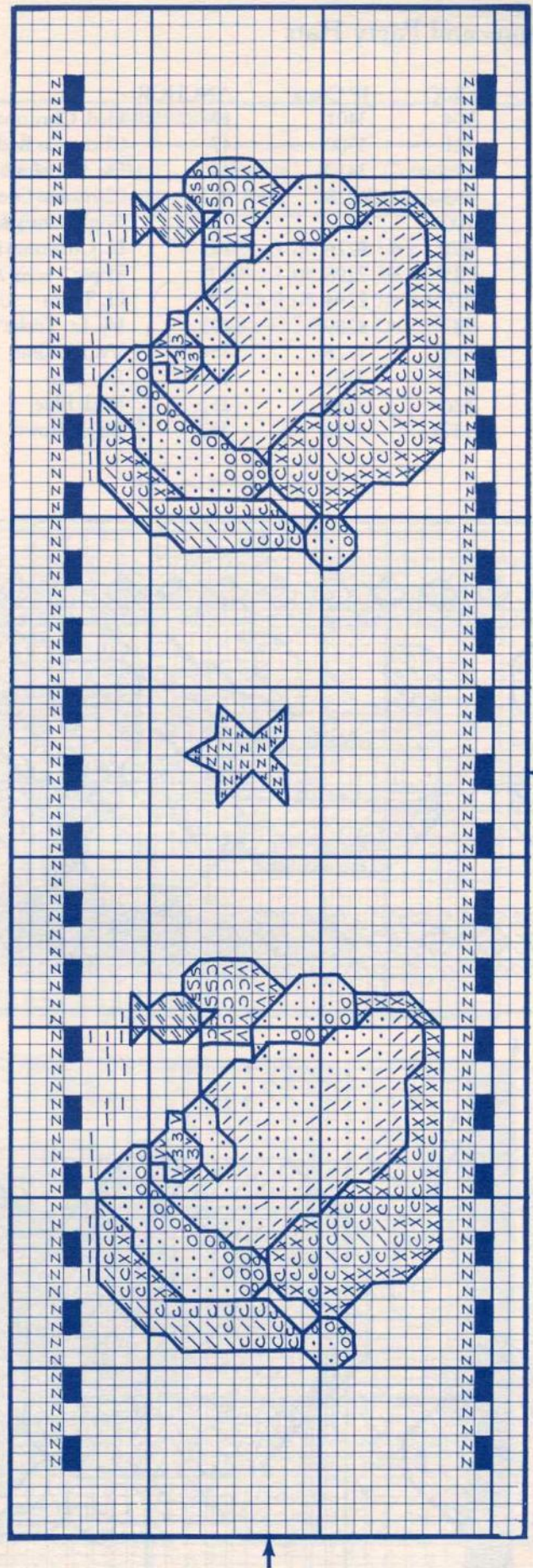
Shaded area indicates last two rows from previous page



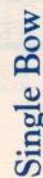
Single Bow



Santas



©1991 Alma Lynne Designs, Inc.



Style Bow
DMC JP Coats ANCHOR

Special Instructions
Backstitch - 309

Special Instructions: Backstitch - 3371

26

Santas

DMC	JP Coats	ANCHOR
-----	----------	--------

Special Instructions: Backstitch - 3371

26

Santas

DMC	JP Coats	ANCHOR
-----	----------	--------

Special Instructions: Backstitch - 3371

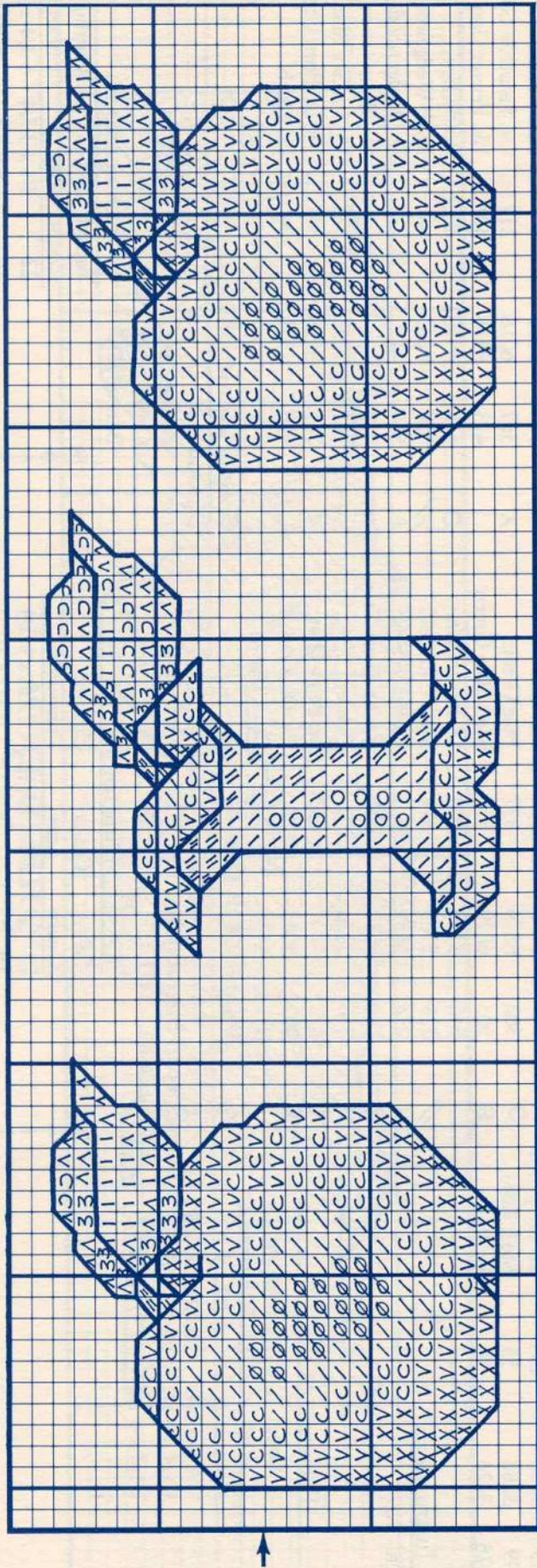
26

Special Instructions: Backstitch

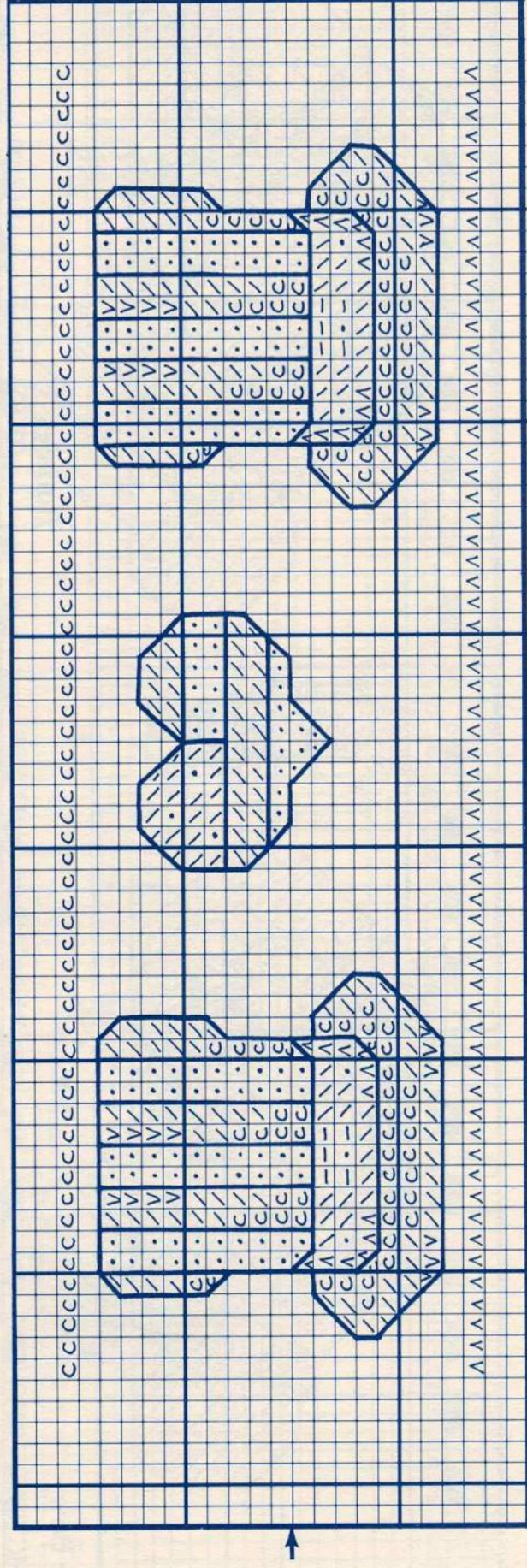
Dimensions

Fabric	Design	Cutting
Count	Area	Dimensions
22	$3/4 \times 3/4$	$6 3/4 \times 9 3/4$
18	$1 \times 4 5/8$	$7 \times 10 5/8$
14	$1 1/4 \times 5 7/8$	$7 1/4 \times 11 7/8$
11	$1 5/8 \times 7 1/2$	$7 5/8 \times 13 1/2$

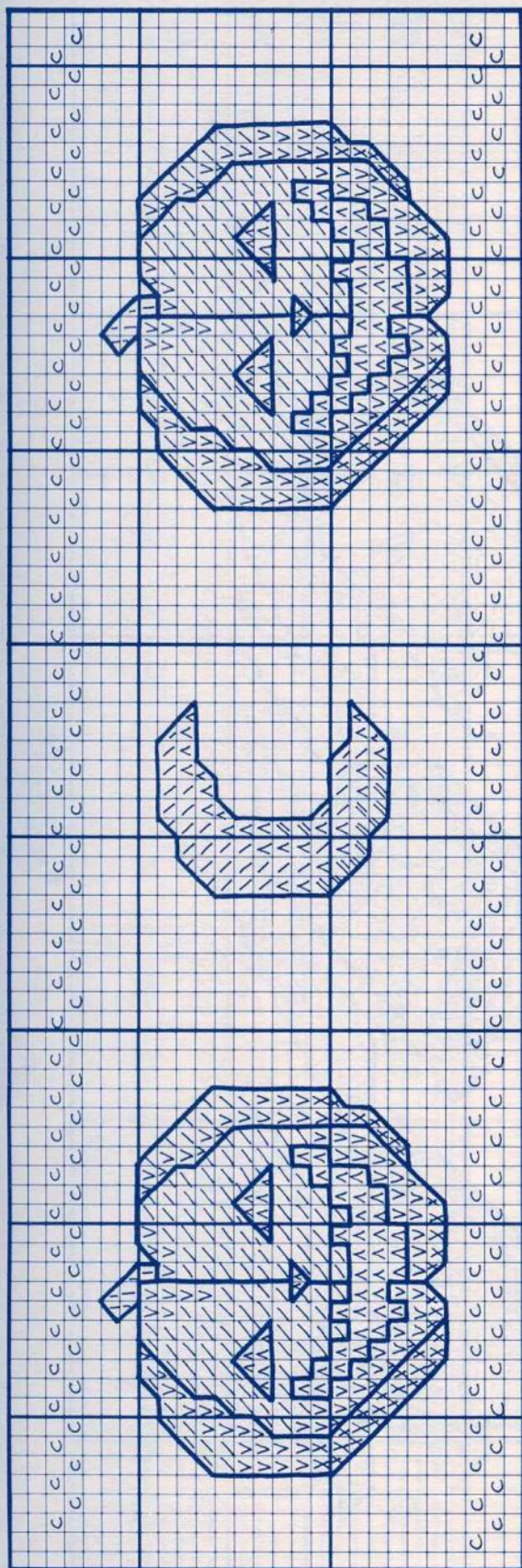
Apples



Patriotic Hats



Jack-O-Lanterns



Apples

	DMC	JP Coats	ANCHOR
O	Ecru	1002	387
3	319	6246	218
Ø	320	6017	215
Ø	321	3500	47
A	367	6018	217
I	368	6016	214
/	498	3410	43
//	677	—	886
\	746	—	275
//	801	5475	359
V	815	3000	44
C	816	3410	20
X	902	3083	72
	3371	5478	382

Special Instructions
Backstitch - 3371

Dimensions

Fabric Count	Design Area	Cutting Dimensions
22	1 x 3	7 x 9
18	1 1/8 x 3 5/8	7 1/8 x 9 5/8
14	1 1/2 x 4 3/4	7 1/2 x 10 3/4
11	1 7/8 x 6	7 7/8 x 12

Patriotic Hats

	DMC	JP Coats	ANCHOR
V	223	3241	895
A	930	7052	922
\	931	7051	921
—	932	7050	343
C	3371	5478	382
/	3721	—	—
	3722	—	896

Special Instructions
Backstitch - 3371

Dimensions

Fabric Count	Design Area	Cutting Dimensions
22	7/8 x 2 7/8	6 7/8 x 8 7/8
18	1 1/8 x 3 1/2	7 1/8 x 9 1/2
14	1 3/8 x 4 1/2	7 3/8 x 10 1/2
11	2 x 5 5/8	8 x 11 5/8

Jack-O-Lanterns

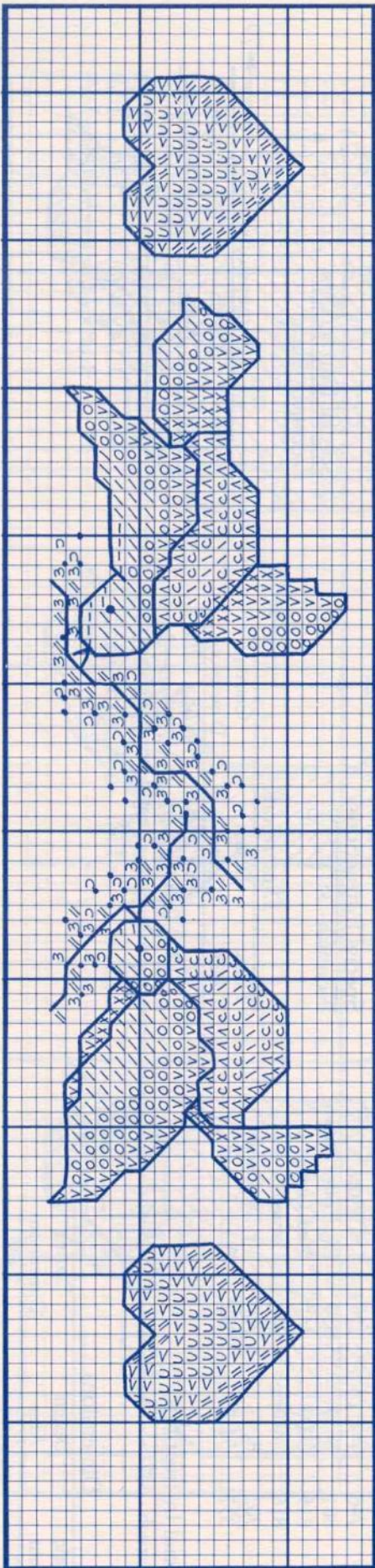
	DMC	JP Coats	ANCHOR
C	310	8403	403
//	725	2298	305
V	726	2294	295
\	727	2289	293
X	920	3337	339
V	921	—	338
/	922	3336	337
I	3371	5478	382

Special Instructions
Backstitch - Black

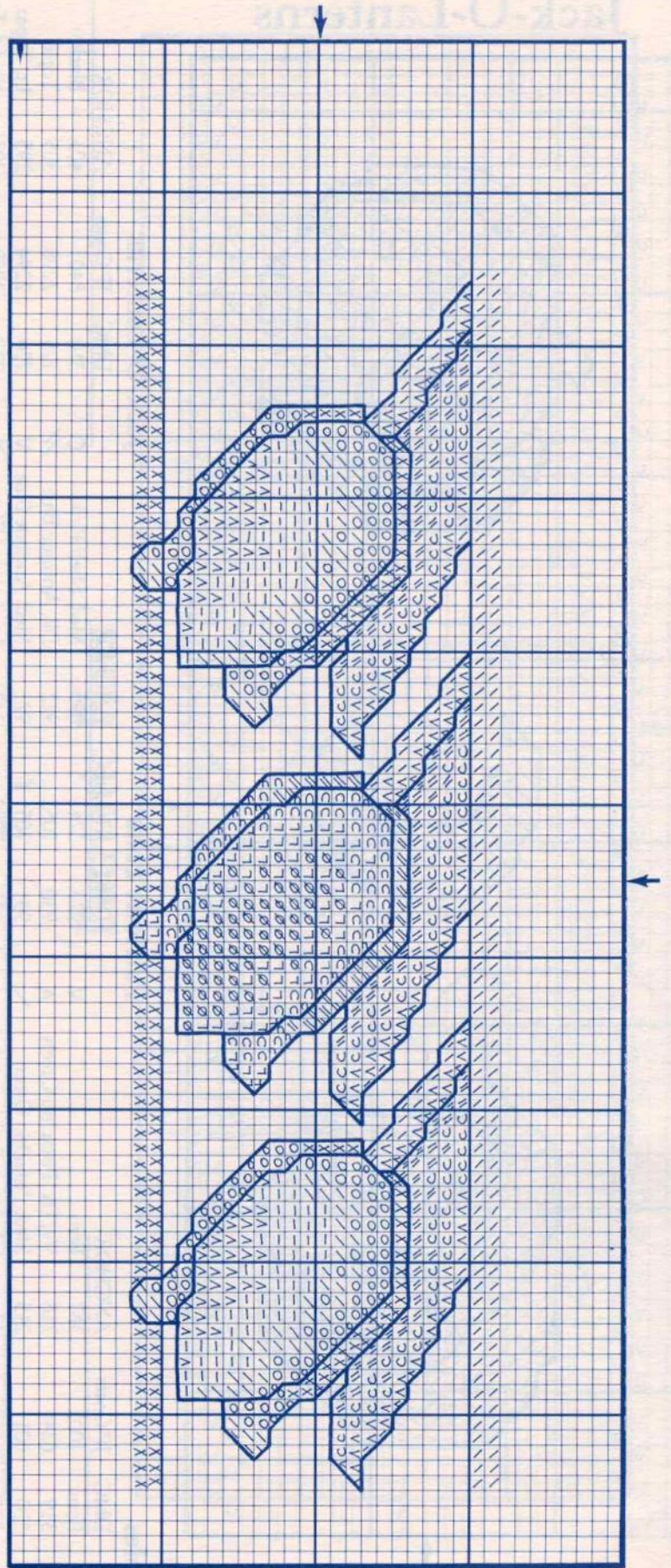
Dimensions

Fabric Count	Design Area	Cutting Dimensions
22	1 1/8 x 3 5/8	7 1/8 x 9 5/8
18	1 3/8 x 4 3/8	7 3/8 x 10 3/8
14	1 3/4 x 5 5/8	7 3/4 x 11 5/8
11	2 1/8 x 7 1/8	8 1/8 x 13 1/8

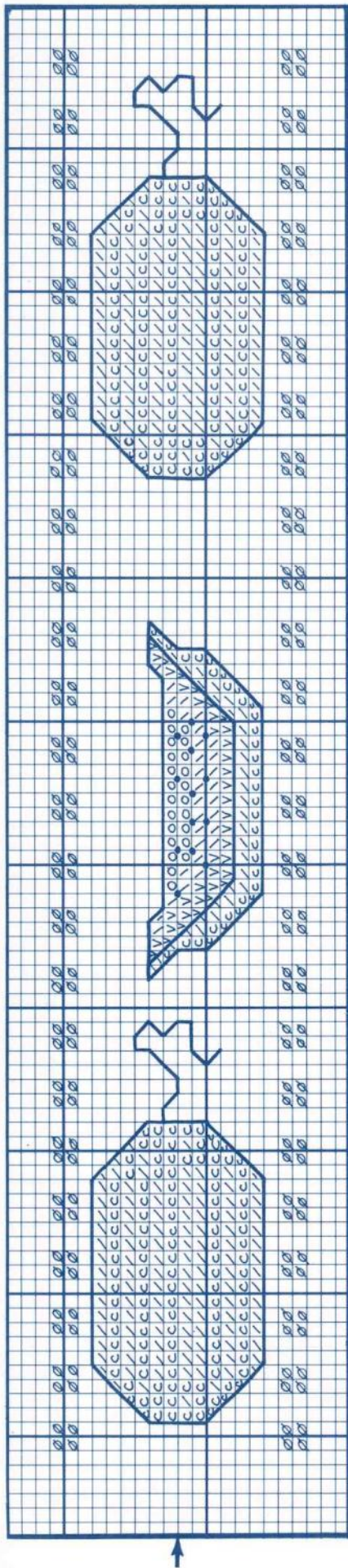
Birds and Hearts



Tulips



Melons



Birds and Hearts

	DMC	JP Coats	ANCHOR
X	312	7979	979
	319	6246	218
3	320	6017	215
V	322	7978	978
O	334	7977	977
//	367	6018	217
∩	368	6016	214
C	676	2305	891
∪	677	—	886
Λ	729	5363	874
—	775	7031	975
U	776	3281	24
≡	899	3282	55
/	3325	7976	144
<	3326	3126	36
	3371	5478	382

Special Instructions

Backstitch

Birds - 312

Hearts - 899

Twigs - 319

French Knots for eyes - 3371

French Knots for flowers - alternate 899, 776, and 775

Dimensions

Fabric Count	Design Area	Cutting Dimensions
22	7/8 x 4 1/8	6 7/8 x 10 1/8
18	1 1/8 x 5	7 1/8 x 11
14	1 3/8 x 6 1/2	7 3/8 x 12 1/2
11	1 7/8 x 8 1/4	7 7/8 x 14 1/4

Tulips

	DMC	JP Coats	ANCHOR
//	208	4301	110
∩	209	4302	109
L	210	4303	108
∅	211	4303	342
≡	309	3284	42
Λ	319	6246	218
C	320	6017	215
∪	367	6018	217
∩	368	6016	214
/	776	3281	24
—	818	3281	23
V	819	3280	271
X	890	6021	—
O	899	3282	55
	3326	3126	36

Special Instructions

Backstitch

Pinks - 309

Lavender - 208

Greens - 890

Dimensions

Fabric Count	Design Area	Cutting Dimensions
22	1 1/8 x 3 5/8	7 1/8 x 9 5/8
18	1 3/8 x 4 1/2	7 3/8 x 10 1/2
14	1 3/4 x 5 3/4	7 3/4 x 11 3/4
11	2 1/8 x 7 1/4	8 1/8 x 13 1/4

Melons

	DMC	JP Coats	ANCHOR
V	349	2335	13
∪	351	3011	10
∩	352	3008	9
∅	353	3006	8
∩	825	7181	162
∩	904	6258	—
C	906	6256	256
/	907	6001	255
	3371	5478	382

Special Instructions

Backstitch

Green area - 904

Coral area - 349

French Knots for seeds - 3371

Dimensions

Fabric Count	Design Area	Cutting Dimensions
22	7/8 x 4 1/2	6 7/8 x 10 1/2
18	1 x 5 1/8	7 x 11 1/8
14	1 1/4 x 7	7 1/4 x 13
11	1 5/8 x 8 7/8	7 5/8 x 14 7/8